



HARDWARE & SECURITY

Section	Page
Padlocks	522-527
Security	528
Chains & Accessories	529-530
Hasps, Staples & Cylinders	530-531
Safes	531
Hardware & Ironmongery	531-532



PADLOCKS



Padlock Dimensions

Shown under Dimensions in the information section of each item

- B = Hasp width
- D = Shackle diameter
- C = Hasp height
- A = Lock width

Keyed Alike Version

Look for the "KEYED ALIKE VERSION AVAILABLE" logo on many of the padlocks.

For a small charge your padlock can be customised as a "keyed alike" version and can be supplied with as many as you require with one combination of lock.

Contact us for further information on this service.



Heavy Duty Solid Brass Padlocks



- Draper security rating: 7/10
- Expert quality
- Solid brass body with hardened steel shackle
- Replaceable mushroom pin tumbler
- Bumper to prevent damage to locked items
- Complete with 2 keys
- Key blanks available

Code	Part No	Dimensions (mm)	List Price (exc VAT)
64167	8304/40	A40 x B19 x C25 x D6	£21.96
64168	8304/44	A44 x B19 x C27 x D8	£26.42
64169	8304/50	A50 x B19 x C27 x D9	£31.38
64170	8304/63	A63 x B31 x C27 x D10	£35.94

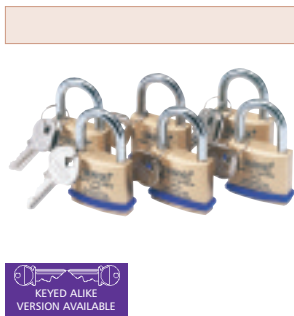


Solid Brass Padlocks with Shrouded Shackle



- Draper security rating: 5/10
- Solid brass body with hardened steel shrouded shackle which prevents attack from bolt croppers, etc
- Special bumper to prevent damage to locked item
- Complete with 2 keys
- Key blanks available

Code	Part No	Dimensions (mm)	List Price (exc VAT)
64171	8305/30	A30 x B12 x C14 x D5	£8.52
64172	8305/40	A40 x B14 x C19 x D7	£9.94
64173	8305/50	A50 x B18 x C20 x D8	£16.58

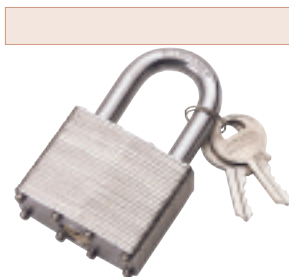


Pack of 6 Keyed Alike Solid Brass Padlocks



- Draper security rating: 5/10
- Pack of 6 solid brass bodied padlocks with identical keys, ideal for multiple-users
- Mushroom pin tumblers
- Special bumper to prevent damage to locked item
- Hardened steel shackle
- Complete with 2 keys per padlock
- Key blanks available

Code	Part No	Dimensions (mm)	List Price (exc VAT)
67659	8302/40/KA	A40 x B22 x C24 x D6	£49.50
67663	8302/60/KA	A60 x B35 x C32 X D9	£99.50



Laminated Steel Padlocks



- Draper security rating: 3/10
- Laminated zinc plated steel case and brass cylinder
- Complete with 2 keys
- Key blanks available

Code	Part No	Dimensions (mm)	List Price (exc VAT)
14019	LT100/30	A30 x B14 x C16 x D5	£2.72
14020	LT100/40	A40 x B20 x C23 x D6	£4.12
21584	LT100/45	A45 x B20 x C27 x D8	£4.70
14021	LT100/50	A50 x B25 x C31 x D8	£5.36



Solid Steel Padlock



- Draper security rating: 10/10
 - Expert quality
 - Hardened steel lock body with concealed hardened steel shackle
 - Changeable 6 pin brass cylinder for servicing and re-keying
 - Lever locking mechanism
 - Complete with 2 keys
 - Key blanks available
- Specification:-**
- Body diameter: 73mm
 - Shackle diameter: 11mm

Code	Part No	List Price (exc VAT)
64525	8317/73	£45.20



PADLOCKS



Laminated Steel Padlocks

- Draper security rating: 4/10
- Laminated steel body with hardened steel shackle
- Precision pin tumbler and brass cylinder
- Special cover to prevent damage to locked item
- Complete with 2 keys
- Key blanks available

Code	Part No	Dimensions (mm)	List Price (exc VAT)
64179	8308/30	A30 x B14 x C15 x D5	£6.48
64180	8308/40	A40 x B20 x C18 x D6	£6.76
64181	8308/44	A44 x B21 x C22 x D7	£7.50
64182	8308/50	A50 x B23 x C22 x D8	£9.56
64183	8308/65	A65 x B32 x C29 X D11	£12.38



Weatherproof Laminated Steel Padlocks

- Draper security rating: 4/10
- Laminated steel body with hardened plated coating steel shackle
- Precision pin tumbler and brass cylinder
- Special bumper to prevent damage to locked item
- Incorporates weatherproof lock cover
- Complete with 2 keys
- Key blanks available

Code	Part No	Dimensions (mm)	List Price (exc VAT)
64176	8307/45	A45 x B17 x C17 x D8	£9.46
64178	8307/54	A54 x B20 x C20 x D10	£10.06



Weatherproof Laminated Steel Padlock

- Draper security rating: 4/10
- Extra long shackle
- Laminated steel body with hardened, plated coating with extra long steel shackle
- Precision pin tumbler and brass cylinder
- Special bumper to prevent damage to locked item
- Incorporates weatherproof lock cover
- Complete with 2 keys
- Key blanks available

Code	Part No	Dimensions (mm)	List Price (exc VAT)
64177	8307/45L	A45 x B18 x C59 x D8	£12.26



Heavy Duty Solid Steel Padlocks

- Draper security rating: 9/10
- Expert quality
- Solid steel body with quick change molybdenum steel shackle
- Changeable 6 pin brass lock cylinder for servicing and re-keying
- Dual stainless steel ball locking mechanism
- Bumper to prevent damage to locked item
- Complete with 2 keys
- Key blanks available

Code	Part No	Dimensions (mm)	List Price (exc VAT)
64192	8311/46	A46 x B20 x C27 x D8	£21.88
64193	8311/54	A54 x B20 x C27 x D9	£27.50
64194	8311/61	A61 x B31 x C27 x D11	£38.90
64195	8311/70	A70 x B38 x C35 x D12	£52.50



Heavy Duty Solid Steel Padlocks with Shrouded Shackle

- Draper security rating: 10/10
- Expert quality
- Hardened steel lock body with electric coating and super tough molybdenum steel shackle
- Changeable 6 pin precision tumbler brass lock cylinder for servicing and re-keying
- Shrouded shackle for extra protection against attack
- Bumper to prevent damage to locked item
- Complete with 2 keys
- Key blanks available

Code	Part No	Dimensions (mm)	List Price (exc VAT)
64196	8312/46	A46 x B19 x C25 x D8	£37.08
64197	8312/50	A50 x B20 x C25 x D9	£47.24
64198	8312/61	A61 x B20 x C28 x D11	£80.20
64199	8312/70	A70 x B20 x C33 x D12	£116.74





PADLOCKS



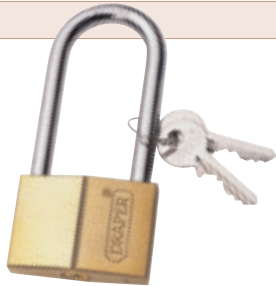
Heavy Duty Padlocks with Extra Long Shackle



- Draper security rating: 9/10
- Expert quality
- Solid steel body with molybdenum steel extra long shackle
- Changeable 6 pin brass lock cylinder for servicing and re-keying
- Dual steel ball locking mechanism
- Complete with 2 keys
- Key blanks available

Code	Part No	Dimensions (mm)	List Price (exc VAT)
64206	8315/6325L	A63 x B23 x C25 X D11	£28.00
64207	8315/6350L	A63 x B23 x C50 x D11	£29.32
64208	8315/6375L	A63 x B23 x C75 x D11	£30.62

See page 522 for padlock dimensions



Long Shackle Padlocks



- Draper security rating: 2/10
- Extruded brass body with plated steel shackle
- Complete with 2 keys
- Key blanks available

Code	Part No	Dimensions (mm)	List Price (exc VAT)
21578	PL101/40	A40 x B21 x C59 x D6	£10.20
21579	PL101/50	A50 x B27 x C69 x D8	£14.62
21580	PL101/60	A60 x B35 x C79 x D9	£26.42

See page 522 for padlock dimensions



130 Series Laminated Steel Padlocks



- Hardened steel shackle, double bolted locking mechanism, paracentric keyway and anti-pick cylinder
- Double bolted locking mechanism for extra strength to resist torsion and pull attacks
- Zinc plated steel laminated body for extra strength and resistance against corrosion
- Anti-pick mushroom pins for extra protection against picking
- Paracentric keyway for extra protection against manipulation
- 10 year guarantee

Code	Size (mm)	List Price (exc VAT)
Open Shackle		
K13030D	30	£3.82
K13040D	40	£5.52
K13050D	50	£7.65
K13060D	60	£10.20
Long Shackle		
K13040L40D	40 x 40	£6.80



125 Series Premium Brass Padlocks



- Solid brass body, paracentric keyway and anti-pick cylinder
- Available in a wide range of size, shackle, keying and pack options
- Available as a service padlock allowing padlocks to be manufactured to specific keying requirements
- Hardened steel shackle for extra protection against hacksaw and cropping attacks
- Double bolted locking mechanism (30mm and above) for extra strength to resist torsion and pull attacks
- Solid brass body for added resistance against corrosion
- Anti-pick mushroom pins for extra protection against picking
- Paracentric keyway for extra protection against manipulation
- 10 year guarantee

Code	Size (mm)	List Price (exc VAT)	Code	Size (mm)	List Price (exc VAT)
K12515D	15	£2.97	Twin Pack		
K12520D	20	£2.97	K12520D2	20	£4.08
K12525D	25	£3.62	K12530D2	30	£5.95
K12530D	30	£4.08	K12540D2	40	£7.23
K12535D	35	£4.89	K12550D2	50	£11.06
K12540D	40	£5.10	Close Shackle		
K12545D	45	£7.23	K12540XD	40	£8.50
K12550D	50	£8.08	K12550XD	50	£11.06
K12560D	60	£10.20	Long Shackle		
			K12540L40D	40 x 40	£5.52
			K12540L63D	40 x 63	£5.95
			K12550L80D	50 x 80	£10.00



PADLOCKS



110 Series Brass Combination Padlocks

The convenience of a keyless resettable combination mechanism allowing the code to be set to a memorable number of choice.

- Solid brass body for added resistance against corrosion
- 10 year guarantee

Code	Size (mm)	List Price (exc VAT)
K11020D	20	£4.67
K11030D	30	£5.95
K11040D	40	£10.20



190 Series High Security Padlocks

- Designed and manufactured in accordance with the stringent internationally recognised Central European Norm specifications
- The close shackle version conforms to BS EN 12320: Class 6
- Amongst the most secure padlock available today
- Crafted from a solid block of high grade hardened steel, weighing over 1.5Kg (3.3lb)
- Will resist the most brutal of attacks

- The re-keyable, drill resistant 6-pin cylinder featuring anti-pick pins, is designed to resist intelligent picking and manipulation methods, whilst the 14mm hardened boron steel shackle is secured in the locked position by 2 ball bearings
- 10 year guarantee

Code	Size (mm)	List Price (exc VAT)
K19070D	70	£51.06
K19070XD	70 - close shackle	£59.57



160 Series Disc Padlocks

- Robust stainless steel body
- In the locked position the distinctive shape protects the shackle from saw and cropping attack whilst the anti-drill (70mm only), anti-pick cylinder provides excellent protection to cylinder attack
- Stainless steel body for maximum resistance against corrosion

- Paracentric keyway for extra protection against manipulation
- 10 year guarantee

Code	Size (mm)	List Price (exc VAT)
K16060D	60	£9.35
K16070D	70	£11.06



Padlocks

Code	Description	Size (mm)	List Price (exc VAT)
ABU15850C	Combination padlock	50	£15.62
ABU16040C	Combination padlock	40	£19.36
ABU16050C	Combination padlock	50	£22.38
ABU1801B50C	Combination padlock	50	£21.49
ABU1801B50LC	Combination padlock	50 x 63 (L x W)	£23.49
ABU2070C	Diskus padlock	70	£33.70
ABU2080C	Diskus padlock	80	£39.53
ABU2670C	Diskus padlock	70	£22.68
ABU2870C	Diskus buffo padlock	70	£15.62
ABU3755C	Granit high security padlock	55	£68.51
ABU3760CSC	Granit high security closed shackle padlock	60	£84.17
ABU4150C	Laminated steel padlock	50	£10.64
ABU6525C	Premium brass padlock	25	£4.51
ABU6530C	Premium brass padlock	30	£5.11
ABU6540C	Premium brass padlock	40	£6.38
ABU6550C	Premium brass padlock	50	£10.21
ABU6560C	Premium brass padlock	60	£12.72
ABU6540LS40C	Long shackle premium brass padlock	40 x 40 (L x W)	£7.45
ABU6540LS63C	Long shackle premium brass padlock	40 x 63 (L x W)	£8.04
ABU6550LSC	Long shackle premium brass padlock	50 x 80 (L x W)	£11.28
ABU6540TC	Premium brass padlock - twin pack	40	£12.68
ABU6550TC	Premium brass padlock - twin pack	50	£19.53
ABU9280C	Shutter padlock	80	£39.15
ABU20075SC	Hasp and staple	75	£3.32
ABU20095SC	Hasp and staple	95	£4.89
ABU200115SC	Hasp and staple	115	£6.26
ABU200135SC	Hasp and staple	135	£7.66
ABU200155SC	Hasp and staple	155	£8.77
ABU125150C	Heavy-duty hasp and staple	150 x 60 (L x W)	£36.21



ABU1801B50C



ABU1801B50LC



ABU2070C



ABU6530C





PADLOCKS

High Security - CEN Grade Padlocks



HLS501

Manufactured in Britain and guaranteed for 10 years, Squire hi-security re-keyable Stronghold® padlocks can be integrated into existing security systems with a range designed to accept interchangeable international cylinders. Meeting proposed CEN security standards, the double locking Squire Stronghold® range of padlocks are manufactured from solid billets of steel with hardened boron shackles and solid brass bodies with stainless steel shackles. When ordering Europrofile versions use the suffix E (i.e. SS50E).

SS50 Range



SS65 Range



Code	Type	Description	Pin Cylinder	Body Width (mm)	Security Standard	List Price (exc VAT)
HLS50S	Solid steel	Lockset	6	50	CEN5	£87.18
HLS50P5	Solid steel	Lockset P5	5	50	CEN3	£51.99
SB50P5	Solid brass	Open shackle P5	5	50	CEN3	£31.24
SB50CP5	Solid brass	Closed shackle P5	5	50	CEN3	£39.62
SS50P5	Solid steel	Open shackle P5	5	50	CEN3	£29.82
SS50CP5	Solid steel	Closed shackle P5	5	50	CEN4	£37.82
SB50CS	Solid brass	Closed shackle	6	50	CEN3	£53.95
SB50S	Solid brass	Open shackle	6	50	CEN3	£41.98
SS50 2.5	Solid steel	Long shackle, 63mm VSC	6	50	CEN4	£41.51
SS50CS	Solid steel	Closed shackle	6	50	CEN4	£48.61
SS50S	Solid steel	Open shackle	6	50	CEN4	£39.11
SS65CS	Solid steel	Closed shackle	6	65	CEN6	£95.71
SS65S	Solid steel	Open shackle	6	65	CEN5	£73.61

Laminated Stronglock Padlocks



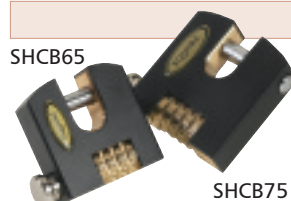
Manufactured in Britain and guaranteed for 10 years, Squire's rugged laminated steel Stronglock range feature a 4 pin tumbler lock mechanism offering over 1,000 key combinations

- All hardened steel

Code	Shackle	Verticle Shackle Clearance (mm)	Body Width (mm)	List Price (exc VAT)
35	Open shackle		38	£8.71
35 2.5	Open shackle	63	38	£14.75
37	Open shackle		45	£11.89
37 2.5	Open shackle	63	45	£17.91
37CS	Closed shackle		45	£14.91
39	Open shackle		50	£12.87
39 2.5	Open shackle	63	50	£19.16
39CS	Closed shackle		50	£15.96

Also available brass laminated (45SS + 49SS) and steel double locking key retaining (HS2 and HS3)

Laminated Stronglock Combination Padlocks



SHCB65

SHCB75

Gone are the days when the only option available for hi-security applications is the key operated hi-security padlock. No longer do you have to live with the problem of keys being lost or stolen. There are now the new patented Hi-security Stronghold® Combination Padlocks, that offer genuine hi-security with the great benefit of no keys to lose.

Code	Description	Body Width (mm)	List Price (exc VAT)
SHCB65	4 wheel	65	£28.05
SHCB75	5 wheel	75	£39.30

Combination Padlocks



CP1 Range

CTL1

CSL1

CLL1

COMBI 2

This comprehensive range of high security combination locks enables the user to not only select the correct size of padlock but their very own 4 digit code, that can be changed as many times as they wish. The closed shackle versions offer additional resistance from bolt croppers. The ability to change the code enables the user to re-instate security if the code number should become known to others. It also allows temporary access to areas by changing to a temporary code number.

Code	Description	Body Width (mm)	List Price (exc VAT)
Die-Cast Mazak Padlocks			
CP1	Open shackle	48	£19.06
CP1 1.5	Open shackle, 38mm vertical shackle clearance	48	£20.58
CP1 2.5	Open shackle, 63mm vertical shackle clearance	48	£23.93
CP1 CS	Closed shackle	48	£26.39
Brass Padlocks			
CLL1	Open shackle, 22mm vertical shackle clearance	20	£6.14
CTL1	Open shackle, 26.4mm vertical shackle clearance	30	£9.18
CSL1	Open shackle, 32.3mm vertical shackle clearance	40	£11.51
Bolts			
COMBI 2	Combination locking bolt	125	£12.38



PADLOCKS



All Terrain – Arctic – Kromelok Padlocks

The Squire weather resistant range of padlocks are designed to be used in applications where both high security and a high level of weather protection are required. They offer the user unrivalled security performance in all weather conditions.



Code	Description	Body Width (mm)	List Price (exc VAT)
ATL4	Brass lock body, steel shackle 5 pin tumbler, soft feel cover	50	£10.78
ATL5	Brass lock body, steel shackle 5 pin tumbler, soft feel cover	60	£14.03
ARC40CS	Stainless steel lock body, stainless steel shackle	40	£18.35
ARC50CS	Stainless steel lock body, stainless steel shackle	50	£33.70
KR30	Chrome plated solid brass padlock with stainless steel shackle	30	£9.50
KR40	Chrome plated solid brass padlock with stainless steel shackle	40	£12.45
KR50	Chrome plated solid brass padlock with stainless steel shackle	50	£19.01
DCL2	Closed shackle stainless steel padlock with stainless steel shackle	70	£17.18



Leopard Range Padlocks

Solid brass padlocks with pin tumbler mechanism and stainless steel springs. Good general security locks for interior and exterior use.

Full range includes closed shackles, long shackles, twin and triple packs, 20-60mm body widths.

Prices start at £3.50 and hit every price point up to £15.00 for the 40mm triple pack.



Lion Range Padlocks

Premium grade, solid brass padlocks. The Lion range have a thicker body section than the Leopard range with larger diameter shackle and more key differs, the Lion range offers a higher level of security. Suitable for interior and exterior use.

Full range of brass padlocks available body size 20-70mm, including long shackle and twin packs.

Prices start at £6.00 and hit every price point up to £19.00 for the 50mm twin pack.



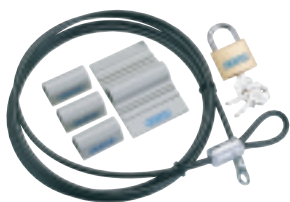
Tri-Circle Padlocks, Cable and Shackle Locks

Description		Sizes (mm)	Description		Sizes (mm)
Tri-Circle Brass		20 - 63	Tri-Circle Brass Shutter		60 - 80
Tri-Circle Discus		60 - 90	Tri-Circle Solid Steel		50 - 65
Tri-Circle Closed Shackle		50 - 70	Tri-Circle Brass Block		70 - 80
Spiral Cable Locks		10 x 1,000 12 x 1,000	Tri-Circle Stainless Steel Armoured		60 - 90
Combination Cable		10 x 1,500 12 x 1,500	Standard and Heavy Duty U-Shackle Locks		14 x 180 x 245 14 x 180 x 320 18 x 170 x 320
Steel Security Cables Standard and Extra Long		10,12,15 x 1,800 12 x 2,100 12 x 4,500 12 x 9,000	Standard and Heavy Steel Locking Cables		15 x 1,000 25 x 1,200
Steel Cable and Shackle		15 x 1500 20 x 1,500	Steel Joint Lock		22 x 1,200



SECURITY

Appliance Security Kit



- Universal kit for the securing of "attractive" items in the office or home such as VCR's, TV's, CD players, computers, etc
- Cable is linked to product by means of fixing plates and padlocked
- 2.5M (approx) PVC coated aircraft steel security cable

Contents:-

- Security cable
- Padlock with 3 keys
- 4 fixing plates
- 4 double-sided adhesive pads
- Cleaning pad

Code	Part No	List Price (exc VAT)
60476	SK1	£17.80

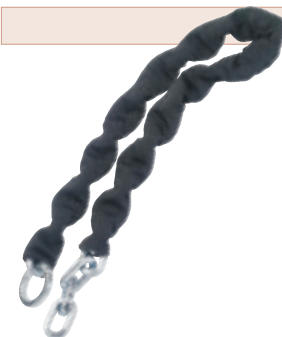
Heavy Duty Round Link Security Chains



- Expert quality
- Hardened round link with PVC sheath for protection
- For domestic and industrial applications

Code	Part No	Chain Link Thickness (mm)	Chain Length (M)	List Price (exc VAT)
63111	SC1	8	0.91	£12.98
63112	SC2	8	1.2	£14.90
66419	SC5	8	2	£23.44
63113	SC3	10	0.91	£19.66
63114	SC4	10	1.2	£23.44
66420	SC6	10	2	£39.94

Heavy Duty Square Link Security Chains



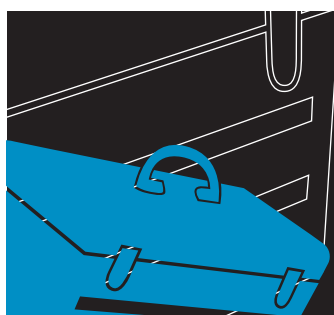
- Expert quality
- Hardened square links with nylon sheath for protection
- For domestic and industrial applications

Code	Part No	Chain Link Thickness (mm)	Chain Length (M)	List Price (exc VAT)
69063	SC7	8	0.91	£13.70
69065	SC9	10	0.91	£21.90
69064	SC8	10	2	£59.68

Security Chains



Type		Sizes (mm)	Description	Security Level
Hardlink		6 x 600 - 1,200 8 x 900 - 1,500	Case hardened, welded steel, zinc plated chain in plastic sleeve	Good basic security
Quadlink		10 x 900 - 2,000	Case hardened, square section, zinc plated steel chain in plastic or fabric sleeve	Heavier duty applications
Hexlink		12 x 1,500 - 2,000	Case hardened, hexagonal section, zinc plated chain in thick fabric sleeve	High security



For a range of site storage, please see the Storage and Handling section, page 746





CHAINS & ACCESSORIES



Welded Chains – Steel



- Supplied in bulk in hanks, 10M boxes, 10M bags or on reels

	Sizes (mm)	Finishes
Straight Link Chains	2.5 - 10	Polished, black, bright zinc, hot galvanised
Steel Long Link Chains (DIN 5685C)	5 - 12	Polished, black, bright zinc, hot galvanised
Steel Short Link Chains (DIN 766)	5 - 12	Polished, bright zinc, hot galvanised
Stainless Steel Chains (AISI 316 & 304)	1.5 - 14	Polished



Small Chains – Brass or Steel

- Finishes: polished, chrome, nickel, zinc, electro brass and electro bronze
- A large range of fittings for fixing, joining and lengthening these chains is available upon request

Description		Wire Diameters (mm)	Description		Wire Diameters (mm)
Curb Chain		1.2 - 2.2	Clock Chain		1.6 - 2
Ball Chain		2.4 - 4.5	Twisted Chain		1.6
Chandelier Chain		13 - 24	Double Oval Chain		1.6 - 1.8
Plumbers Chain		Link length: 17-24	Mattress Chain		1.6
Oval Chain		1.6 - 3	Open-Joint Oval Chain		2.8 - 3.8
Single Jack Chain		1.6 - 4	Gothic Chain		2.2 - 3.8
Double Jack Chain		1.6 - 4	Standard Electro		2.5 - 3.8
Knotted Chain		1.6 - 5	Square Chain		2 - 4



Chain Accessories – Steel

- Finishes: zinc, hot galvanised
- Many of these accessories are also available in stainless steel

Description		Sizes (mm)	Description		Sizes (mm)
Ess Hooks		3 - 10	Wire Rope Grips		3 - 24
Quick Links		3.5 - 16	Wire Rope Thimbles		3 - 24
Mending Links		6 - 10	Wire Rope		2 - 8
Carbine Hooks		4 - 13	Hook on Plate		8 x 50 x 50
Springhooks to Crue		5 - 10	Staple on Plate		6 x 50 x 50
Swivel Springhooks		5 - 10	Ring on Plate		8 x 50 x 50
Dee Shackles		5 - 24	Spiked Chain		6
Bow Shackles		5 - 24	Rigging Screws		6 - 20
Straining Screws		6 - 25	Post Fittings		24



Specialist Assemblies

We can also supply standard specification plumbing assemblies, steel ID and Key/Tag chains.

English Chain are experts in the manufacture of specialist assemblies from their entire range of chains, using a comprehensive range of fittings, from small prototype batches to high volume production runs. They can manufacture to customers' own specification and their unique design and production service provides technical assistance if required.



CHAINS & ACCESSORIES

Plastic Chains, Posts and Bases



Description		Sizes (mm)	Description		Sizes (mm)
Short Link Chain		2 - 10	Sign Kit		297 x 210
Ornamental Chain		6 - 8	Square Post Bases		270 x 270
Spiked Chain		6	Round Post Bases		300
Connecting Links		3 - 10	Triangular Post Bases		290 x 290
"S" Hooks		8	Spiked Posts		40 x 600, 800, 1,000
Post Connectors		170 x 20	Post with Separate Base		40 x 900, 1,100, 1,300

HASPS, STAPLES & CYLINDERS

Hasps and Staples



STH1

STH2

Squires range of hasps and staples are designed for domestic, commercial and industrial use. You can choose your hasp based upon whether a low or high security application is required.

Code	Description	Body Width (mm)	List Price (exc VAT)
Padbars			
STH1	Stronghold CEN grade 6 hi-security padbar	150	£54.09
STH2	Stronghold CEN grade 4 hi-security padbar	150	£37.63
Miniclams			
No 8	Hardened steel maxiclam	215	£16.83
No 6H	Hardened steel clam	154	£6.42
No 45	Miniclam with screws and coach bolt	114	£3.96
Hasp and Staples			
SH1	Hasp and staple	92	£3.46
SHH1	Single hinge hasp and staple	160	£9.16
DHH1	Double hinge hasp and staple	200	£11.38
DCH1	Hasp and staple for DCL1 padlock	120	£7.91
Lock Sets			
DCL1/DCH1	DCL1 with DCH1 - hasp and staple	70/120	£18.22
LH1	Locking hasp, hardened steel	152	£8.76
35/45	Lock and hasp set, 35 padlock with 45 hasp	38/114	£11.14
39/6H	Lock and haps set, 39 padlock with 6H hasp	50/152	£16.82



No 8

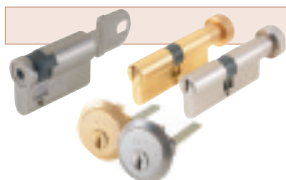


DHH1



DCL1/DCH1

Cylinders



Squire has a comprehensive range of high quality, 6 pin anti-drill cylinders. This range covers all requirements including rim cylinders, single and double ovals (both UK and Scandinavian), single and double euro cylinders, oval and euro knob cylinders, camlocks and threaded rims. All cylinders are available with a Standard, Restricted or Protected section keyway.

Other products available:

- Elite - Dimple pin system
- Magnatex - Patented profile (backwards compatible)
- Magnapin - Anti-bump protection (available across all systems)
- SNAPS SAFE - Anti-snap protection (available across all systems)

Heavy Duty Straight Bar Hasp and Staple



- Hardened steel with a quality chrome and duplex nickel plated finish
- Designed for high security applications
- Complete with recessed and concealed fixings for hasp

Dimensions:-

- Length: 185mm
- Width: 45mm
- Shackle Diameter: 13mm

Code	Part No	List Price (exc VAT)
63269	SH6	£16.70



HASPS, STAPLES & CYLINDERS



Heavy Duty Straight Bar Hasp, Staple and Lock

- Draper security rating: 10/10
- Hardened steel with a quality chrome and duplex nickel plated finish
- Special circular lock with hardened steel shackle
- Designed for high security applications
- Complete with recessed and concealed fixings for hasp

- Removable 6 pin brass cylinder
- Complete with 2 keys

Dimensions:-

- Length: 185mm
- Width: 45mm
- Lock diameter: 73mm



Code	Part No	List Price (exc VAT)
63270	SH7	£75.16



500 Series Van Lock and Hasp

- Almost impervious to conventional forms of attack
- Will resist the most savage of attacks
- High security anti-pick 6-pin locking mechanism

- Fits virtually all vans and trucks with sliding or hinged doors
- Supplied complete with 6 x coach bolts
- 10 year guarantee



Code	List Price (exc VAT)
K50073	£29.78



SAFES



Electronic Safe with Posting Slot

- Solid steel construction
- Special posting slot allows credit cards, letters and documents to be put into the safe without opening
- Electronic combination keypad lock with a programmable 3-8 digit security code system
- Resistant to most hand and mechanical tool attacks
- Keypad has security and battery status LED indicators
- Uses 4 x AA batteries (supplied)

Specification:-

- Door thickness: 4mm
- Body thickness: 2mm
- Dimensions (internal)
L x W x H: 340 x 240 x 200mm
- Dimensions (external)
L x W x H: 350 x 250 x 250mm
- Weight: 12Kg



Code	Part No	Description	List Price (exc VAT)
89333	SAFE9	Safe	£97.14
61834	DLR6/HD	4 x AA batteries	£2.56



Heavy Duty Fireproof Safe

- Solid steel construction wall or floor safe with vault-style door and hinges
- Withstands up to 1,000°C (internal temperature remains less than 160°C) for one hour
- Resistant to most hand and mechanical tool attacks
- Suitable for sensitive documents, digital media, etc
- Supplied complete with 2 keys

Specification:-

- Door thickness: 17mm
- Body thickness: 50mm
- Dimensions (internal)
L x W x H: 300 x 260 x 327mm
- Dimensions (external)
L x W x H: 420 x 350 x 430mm
- Weight: 48Kg



Code	Part No	List Price (exc VAT)
66862	SAFE7	£283.28

HARDWARE & IRONMONGERY



Automatic Door Closers

- UL approved
- For automatic closing of doors in domestic commercial and industrial environments
- Features include latch and close speed adjusters and delay action
- Suitable for both right and left hand hung doors
- Back check facilities (62890 only)
- Complete with fixings



Code	Part No	For Door Weight (Kg)	List Price (exc VAT)
62894	DC 15/30	15-30	£30.78
62893	DC 25/45	25-45	£32.34
62892	DC 40/65	46-65	£40.96
62890	DC 45/85	45-85	£74.62



HARDWARE & IRONMONGERY

Ironmongery

Owlett-Jaton



This wide range of domestic and outdoor ironmongery offers products as diverse as kick-over stable latches and brass wardrobe hooks in a choice of finishes. Branded ranges of shelving, weatherproofing products, tube fittings, castors and vents are also available, offering an extensive choice to the customer.

Hinges

Owlett-Jaton



From the practical concealed hinge to the highly decorative butterfly hinge, this range includes a wide variety of pre-packed and boxed products in a choice of finishes. Heavier types of hinge including tee hinges and adjustable hooks and band for outdoor applications also feature within this range.

Door Handles

Owlett-Jaton



Latest interior design trends are reflected in the Designer pre-packed door furniture range. Choose from polished brass, polished chrome, satin chrome and stainless steel finishes. In addition we offer traditional Georgian, Regency and Victorian polished brass door furniture, popular aluminium door handles and interior door packs, some featuring mortice locks for added security. This range also offers a small selection of door knobs in brass and black antique finishes.

Door Accessories

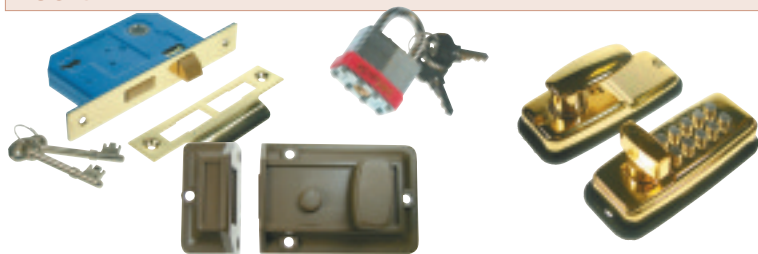
Owlett-Jaton



A broad selection of door accessories appear in this section; from decorative letter plates and escutcheons, to door chains and letter cages. All that is needed to accessorise internal or external doors.

Locks

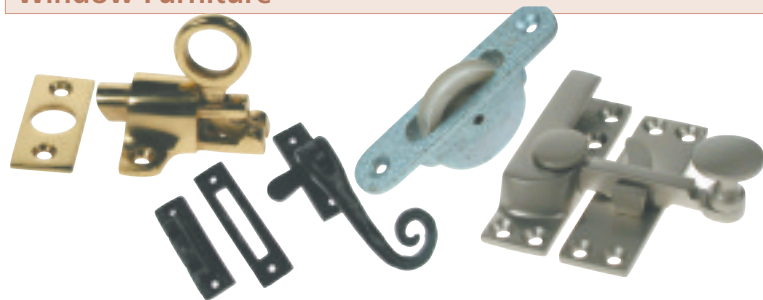
Owlett-Jaton



A range of pre-packed and boxed night latches, mortice locks and digital locks in a choice of finishes. Rebate sets for a variety of locks also feature. Yale, Chubb and Union (Assa Abloy), Squire and Briton brands are included offering heavy duty padlocks, panic bolts and bars, window locks and door closers.

Window Furniture

Owlett-Jaton



A selection of brass, aluminium and decorative black antique casement stays and matching casement fasteners form just one part of this window furniture section. Fan light catches in polished brass or the more modern white PVC option; sash fasteners and fitch fasteners for traditional sash windows and a range of allied products such as sash pulleys, sash lifts and flush pulls combine to offer an extensive array of window accessories.